

INTERIOR FITOUT **\$500K TO \$750K**

Altran Project Management

PROJECT SNAPSHOT:

Client: Camilla

Location: Pacific Fair, QLD

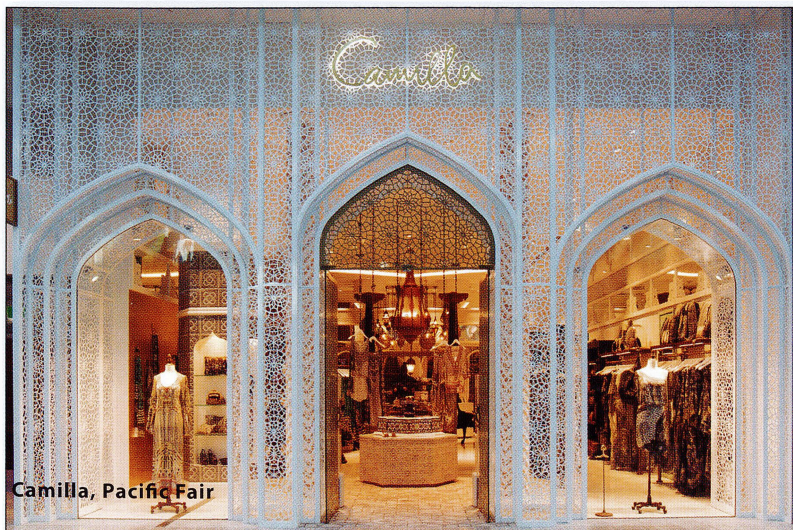
Project Size: 125 square metres

The interior of the Camilla store at Pacific Fair is an amalgamation of Camilla Frank's travels and influences that inspire her creative process. Design elements from Turkey, Morocco, Mexico, China, Africa and beyond have been blended to create an exciting and immersive experience for the customer. The arched shopfront and feature ceiling canopy is a custom fabrication from an aluminium tube structure and clad in laser cut aluminium panels with flat bar capping to give a three dimensional effect. Brass fittings and channels for glazing were engineered into the structure to conceal glazing channels and door hardware fixing points.

All custom made back of house joinery and where possible, retail space sub straights, were manufactured exclusively from Laminex board. The interior utilises over 50 different finishes including custom made tiles from Bali,



furniture and architectural elements from India, lighting from Morocco and Turkey and sculptures from China, plus an array of custom built elements that have been integrated to seamlessly create a unique bespoke interior unlike anything else on offer.



*Complete Design & Construct
Shopfitting & Office Fitouts
Commercial Construction
Australia Wide*

Unit 1, 39-41 Dover Drive
Burleigh Heads QLD 4220
Tel: +61 7 5535 8411
Fax: +617 5535 8433
Email: troy@altran.com.au

www.altran.com.au